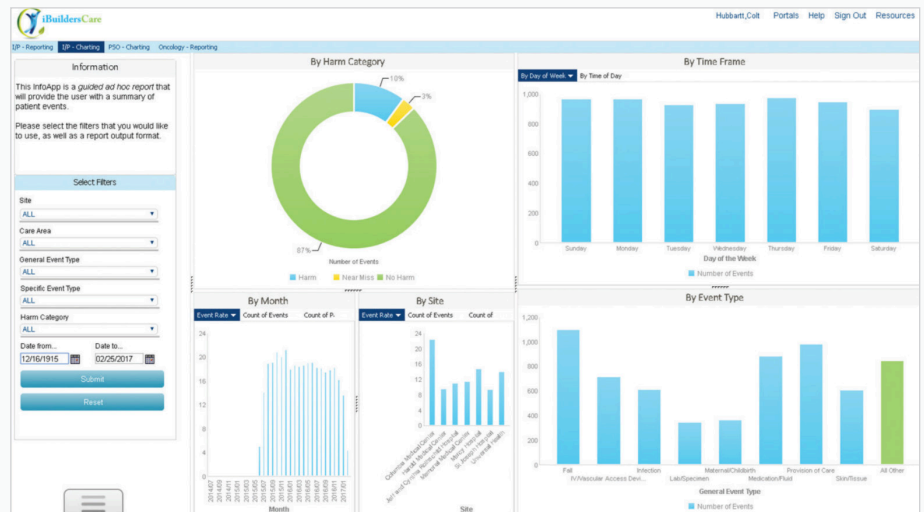


Omni-HealthData™ Insights: Quality and Patient Safety

Information Management for Health Providers

Highlights

- Get a holistic view of care quality
- Improve HEDIS Score and Star Ratings
- Understand the root causes of issues
- Standardize the view of metrics for all users



The Quality and Patient Safety Insights App collects, unifies, and harmonizes data from a variety of internal and external sources, then presents it through a series of executive, departmental, and operational dashboards, featuring drill-through capabilities.

In hospitals across the U.S., 78 percent receive a readmit penalty,¹ 23 percent receive a Hospital-Acquired Condition (HAC) Reduction Program penalty,² and 40 percent are penalized under Value-Based Purchasing.³ Disparate and diverse information sources make it difficult for hospitals and networks to effectively monitor critical quality and safety indicators, as well as track related incidents. Monitoring quality and patient safety reduces the possibilities of these penalties occurring, lowers the cost of care delivery, and improves patient satisfaction.

Information Builders helps organizations transform data into business value. Our business intelligence, integration, and data integrity solutions enable smarter decision-making, strengthen customer relationships, improve performance, and drive growth.

Our Quality and Patient Safety Insights App, part of the Omni-HealthData™ Insights Suite, provides executive, departmental, and operational views of more than 150 core measures and 180 patient safety events, highlighting areas of performance improvement across a

¹ "Hospitals Face Record Penalties as CMS Expands Criteria for Readmissions Fines," Modern Healthcare, August 2016.

² Haefner, Morgan. "769 Hospitals See Medicare Payments Cut Over High HAC Rates: 7 Things to Know," Becker's Hospital Review, December 2016.

³ Muhlestein, David. "Assessment of the Hospital Value-Based Purchasing Program: Current Opportunities for Improvement," Leavitt Partners, November 2015.

variety of service lines. The information is used to perform root cause analysis and inform hospital leadership tasked with performance improvement. All levels of insight include complete drill-up, drill-down, and drill-through capabilities.

Metrics and Measures

Those tasked with performance improvement can closely monitor metrics and measures in the following categories:

- **Quality Core Measures.** Providing more than 150 clinical measures by measure category, facility, discharge station, attending physician, surgeon, or surgeon specialty, with the ability to identify specific patient cases for further investigation
- **Quality Infections.** Monitors infections related to SSIs, CDiff, and MRSA. Infection rates can also be viewed by hospital, department, procedure, surgeon, and discharge date
- **Quality Oncology.** Offers measures related to cancer patients, including volumes, ALOS, readmissions, and mortality
- **Quality Outcomes.** Provides outcome data, such as ALOS, mortality, and readmissions by hospital, CMS populations, payer group, APR-DGR, and trauma flag. Volumes, length of stay, and case mix index for hospitals and individual service lines can also be analyzed
- **Quality Patient Safety Indicators.** Tracks 180 Patient Safety Indicators, including PSI90 by hospital, surgeon specialty, surgeon, and payer group using AHRQ methodology
- **Quality Women and Children.** Monitors the number of ectopic pregnancies, deliveries, hysterectomies, episiotomies, and birth-related safety indicators by time period, with the ability to drill down to individual patient cases

Users

- Quality Staff
- Network Performance Teams
- Nurse Management
- Clinical Analysts
- Department Heads
- Infection Control
- Risk Management

Features

The Quality and Patient Safety Insights App collects, unifies, and harmonizes data from a variety of internal and external sources, then presents it through a series of executive, departmental, and operational dashboards, with drill-through capabilities that allow stakeholders to:

- Track incident rates by location or event type
- Monitor more than 180 event types, including adverse drug reactions, falls, diagnoses and treatments, and medications and fluids
- Chart quality and safety data to uncover patterns, trends, and correlations
- Drill down to detailed data, including individual patient cases

Benefits/Improvements

- Rapidly uncover issues, and understand their root causes or contributing factors down to patient level
- Obtain a holistic view of care quality by combining AHRQ patient safety indicators with information from other sources, including the EMR
- Create a culture of measurement and improvement by ensuring that all stakeholders are using the same consolidated, timely view of critical metrics to support quality and patient safety initiatives
- Improve HEDIS Score and Star Ratings, while lowering the incidents of HACs, Readmits, and VBP penalties
- Identify the true cost of an event
- Correlate patient safety events with staffing levels

Data Sources

- Hospital EMR and Billing Data
- Timekeeping/Payroll Data
- Core Measures/Premier
- NHSN Infection Control Database
- Patient Safety Indicators
- Quintile Stroke Measures
- Tumor Registry
- Trauma Registry
- Cardiac/Obstetrics Registries
- NICU Registry
- Industry Benchmarks
- Mastered Physician/Practice Data

Learn More

For more information visit our website to see how Quality and Patient Safety Insights can serve a range of critical informational needs.

Omni-HealthData™ Insights

Information Builders and St. Luke's University Health Network have joined forces to create Omni-HealthData™ Insights, a suite of out-of-the-box applications that help hospitals and other care providers to leverage data assets across the continuum of care to achieve their strategic priorities. St. Luke's is a six-time Truven Top 100 Award winner, HIMSS Stage 7, and CMS Four-Star Rated IDN.

Worldwide Offices

Corporate Headquarters

Two Penn Plaza
New York, NY 10121-2898
(212) 736-4433
(800) 969-4636

United States

Atlanta, GA* (770) 395-9913
Boston, MA* (781) 224-7660
Channels (770) 677-9923
Charlotte, NC (980) 215-8416
Chicago, IL* (630) 971-6700
Cincinnati, OH* (513) 891-2338
Dallas, TX* (972) 398-4100
Denver, CO* (303) 770-4440
Detroit, MI* (248) 641-8820
Federal Systems, D.C.* (703) 276-9006
Florham Park, NJ (973) 593-0022
Houston, TX* (713) 952-4800
Los Angeles, CA* (310) 615-0735
Minneapolis, MN* (651) 602-9100
New York, NY* (212) 736-4433
Philadelphia, PA* (610) 940-0790
Pittsburgh, PA (412) 494-9699
San Jose, CA* (408) 453-7600
Seattle, WA (206) 624-9055
St. Louis, MO* (636) 519-1411, ext. 321
Washington, D.C.* (703) 276-9006

International

Australia*
Melbourne 61-3-9631-7900
Sydney 61-2-8223-0600

Austria Raffeisen Informatik Consulting GmbH
Wien 43-1-211-36-3344

Brazil
São Paulo 55-11-3372-0300

Canada
Calgary (403) 718-9828
Montreal* (514) 421-1555
Toronto* (416) 364-2760
Vancouver (604) 688-2499

China
Peacom, Inc.
Fuzhou 86-15-8800-93995

Czech Republic InfoBuild Software CE s.r.o.
Praha 420-234-234-773

Estonia InfoBuild Estonia OÜ
Tallinn 372-618-1585

Finland InfoBuild Oy
Espoo 358-207-580-840

France*
Suresnes +33 (0)1-49-00-66-00

Germany
Eschborn* 49-6196-775-76-0

Greece Applied Science Ltd.
Athens 30-210-699-8225

Guatemala IDS de Centroamerica
Guatemala City (502) 2412-4212

India* InfoBuild India
Chennai 91-44-42177082

Israel Team Software Ltd.
Petah-Tikva 972-54-889-9970

Italy
Agrate Brianza 39-039-59-66-200

Japan KK Ashisuto
Tokyo 81-3-5276-5863

Latvia InfoBuild Lithuania, UAB
Vilnius 370-5-268-3327

Lithuania InfoBuild Lithuania, UAB
Vilnius 370-5-268-3327

Mexico
Mexico City 52-55-5062-0660

Middle East Anel Arabia Ltd. Co.
• Riyadh 966-11-483-0016
• Bahrain • Kuwait • Oman • QatarSaudi Arabia
• United Arab Emirates (UAE)

Netherlands*

Amstelveen 31 (0)20-4563333

Belgium

Luxembourg

Nigeria InfoBuild Nigeria

Garki-Abuja 234-9-290-2621

Norway InfoBuild Norge AS c/o Okonor

Tynset 358-0-207-580-840

Portugal

Lisboa 351-217-217-400

Singapore Automatic Identification Technology Ltd.

Singapore 65-69080191/92

South Africa InfoBuild (Pty) Ltd.

Johannesburg 27-11-064-5668

South Korea

Dfocus Co., Ltd.

Seoul 02-3452-3900

UVANSYS, Inc.

Seoul 82-2-832-0705

Southeast Asia Information Builders SEAsia Pte. Ltd.

Singapore 60-172980912/Bangladesh

• Brunei • Burma • Cambodia

• Indonesia • Malaysia • Papua New Guinea

• Thailand • The Philippines • Vietnam

Spain

Barcelona 34-93-452-63-85

Bilbao 34-94-400-88-05

Madrid* 34-91-710-22-75

Sweden

Stockholm 46-8-76-46-000

Switzerland

Brugg 41-44-839-49-49

Taiwan

Galaxy Software Services, Inc.

Taipei 886-2-2586-7890, ext. 114

Tunisia North Africa Business Consulting

Bizerte 215-22-86-85-79

Turkey Paladin Bilisim Danismanlik A.S.

Istanbul 90-532-111-32-82

United Kingdom*

Uxbridge Middlesex 44-20-7107-4000

Venezuela InfoServices Consulting

Caracas 58-212-261-5663

West Africa InfoBuild FSA

Abidjan 225-01-17-61-15

*Training facilities are located at these offices.

Find Out More

We can help you succeed. Talk to your local Information Builders representative to learn how. Visit us at informationbuilders.com, e-mail askinfo@informationbuilders.com, or call (800) 969-4636 in the U.S. and Canada. To improve your skills, visit education.ibi.com.